

Disable Windows Defender Permanently on Windows 10 (2020)

Easily disable windows defender in Windows 10 Permanently! Follow along in this tutorial if you want to temporarily or permanently disable windows defender which comes right out of the box when you install Windows 10.

Video Tutorial

<https://www.youtube.com/watch?v=SPePI00oz8M> Video can't be loaded because JavaScript is disabled: [Disable Windows Defender in Windows 10 Permanently | 2020 \(https://www.youtube.com/watch?v=SPePI00oz8M\)](https://www.youtube.com/watch?v=SPePI00oz8M)

Windows Defender

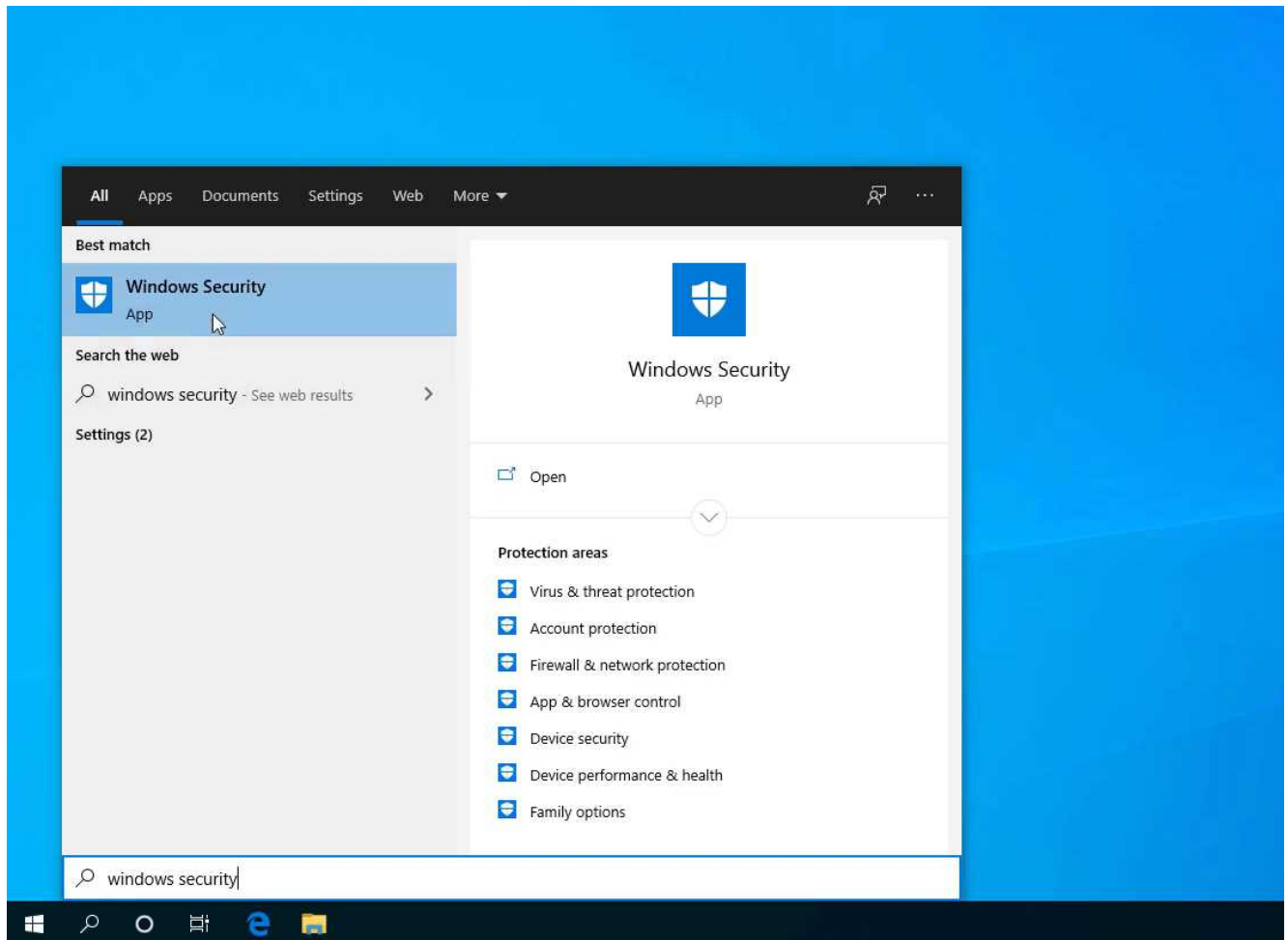
Windows Defender is a base-component included upon the installation of your Windows 10 Operating System which acts as Microsoft's built-in antivirus for their operating systems.

The reputation of Windows antiviruses has been increasing for the past releases and updates of Microsoft which provides typical users with their basic protection against malwares and viruses.

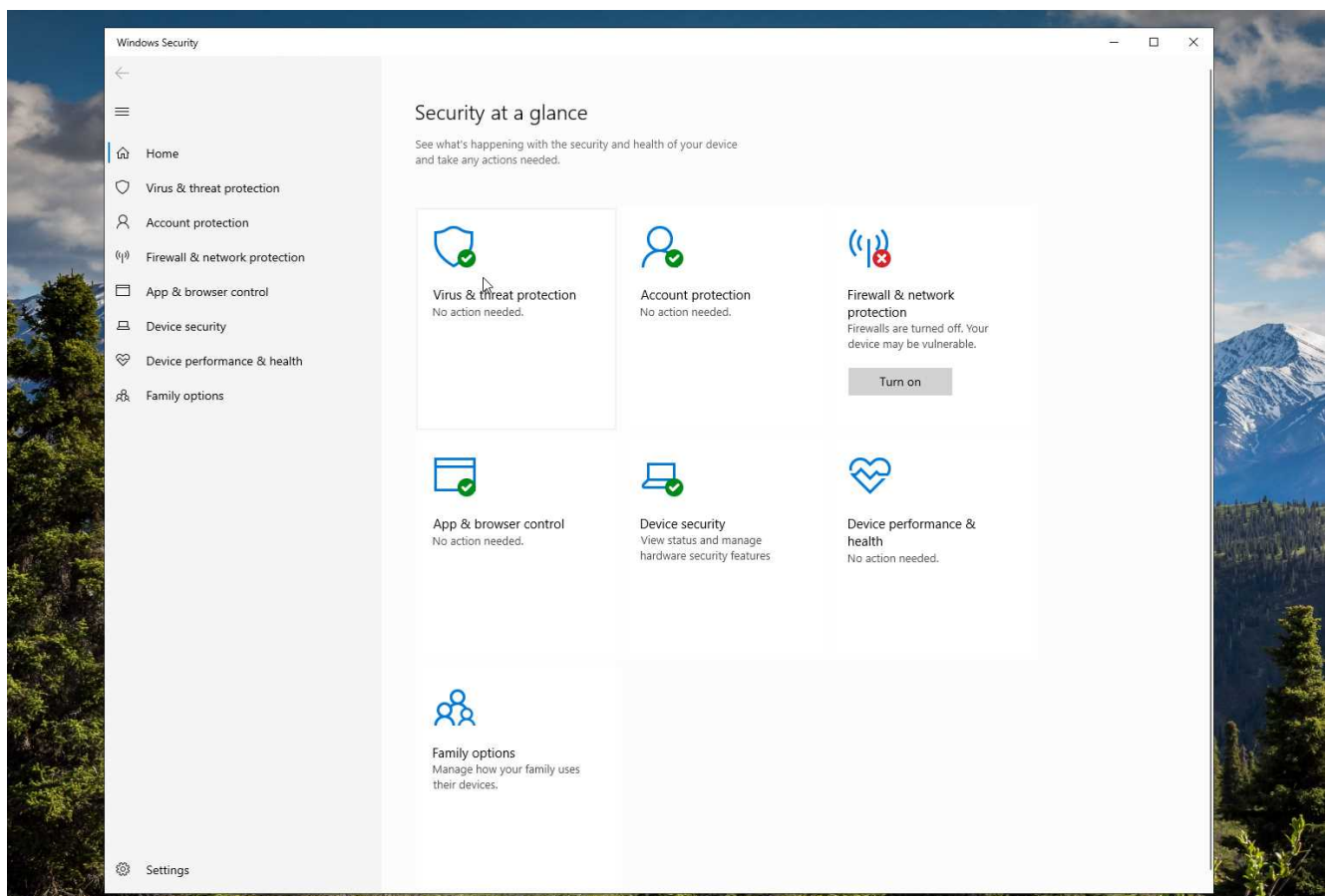
However, if you want to disable this security component there are two ways in doing so:

Disable Temporarily

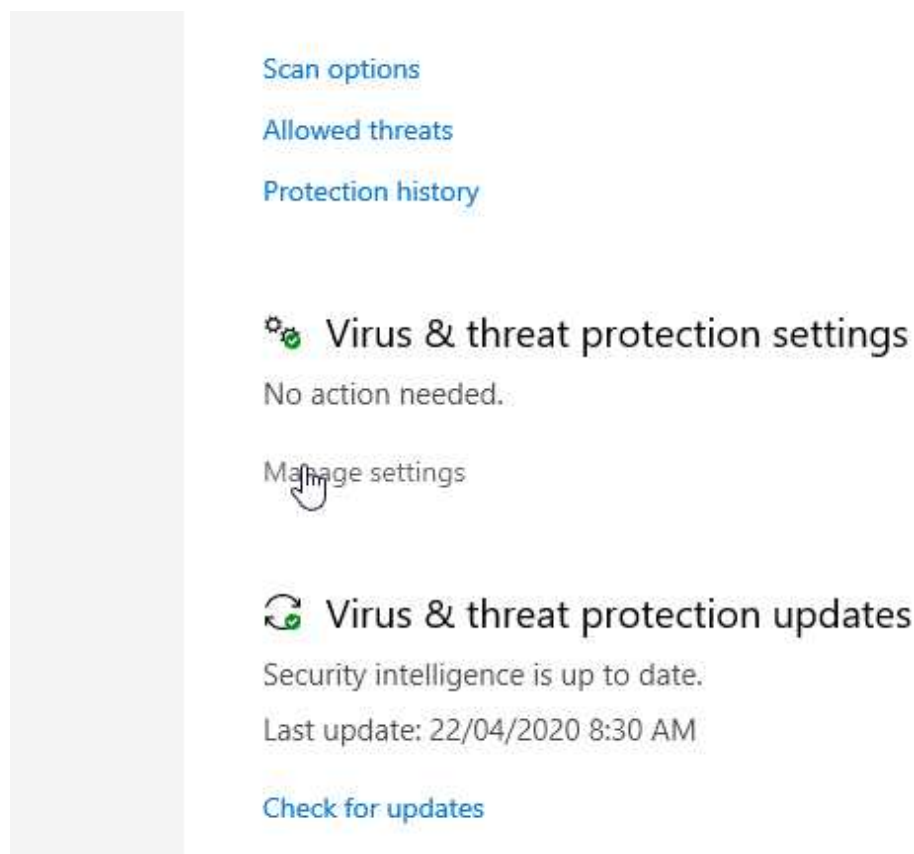
To disable Windows Defender temporarily, go to your start menu and look for Windows Security.



Click on the Virus & Threat Protection.



Open the manage settings under the Virus & threat protection settings.



Turn the real-time protection toggle to off.



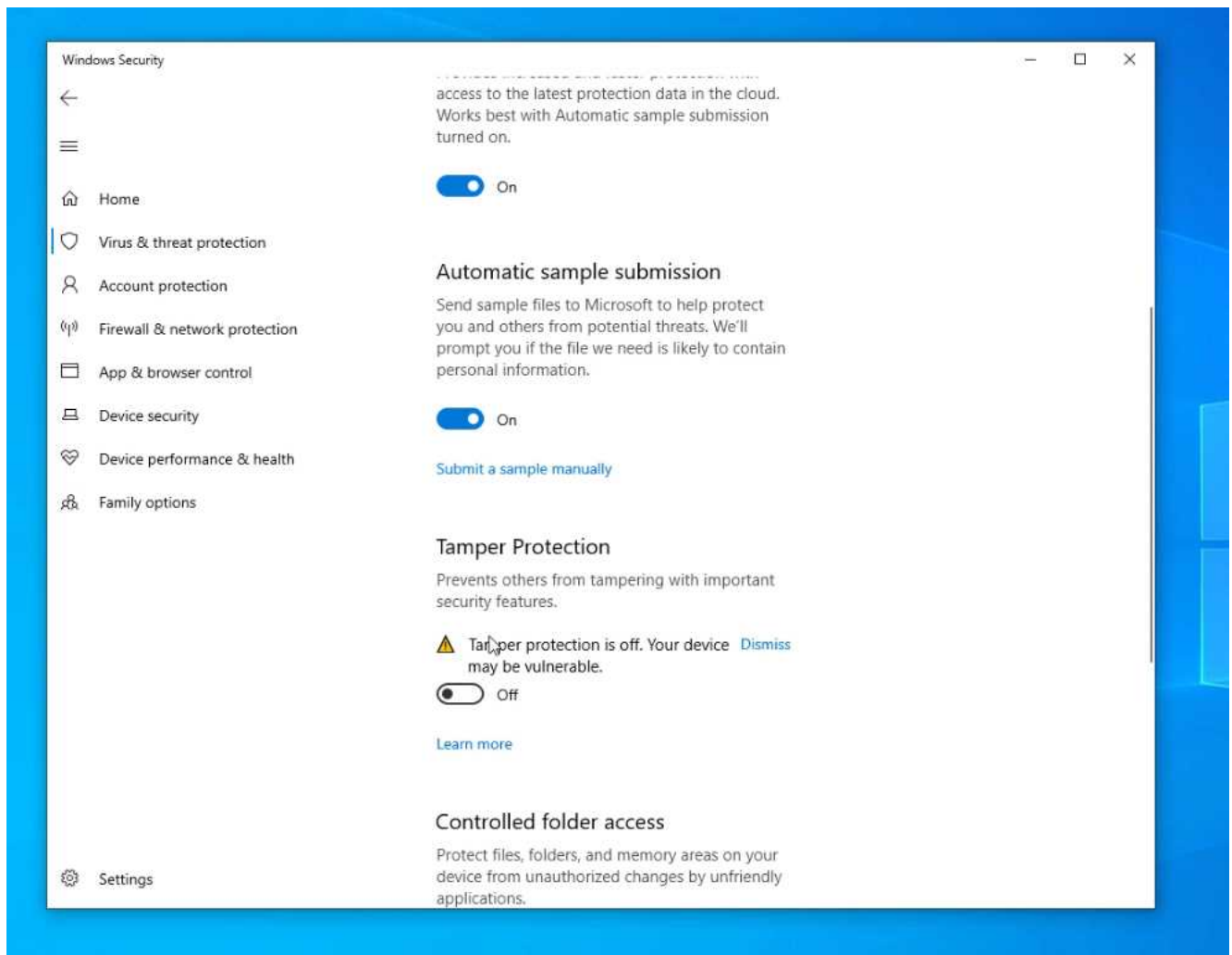
This will temporarily disable Windows Defender service on your Windows 10 device. Upon a certain amount of time, the real-

time protection will re-enable itself.

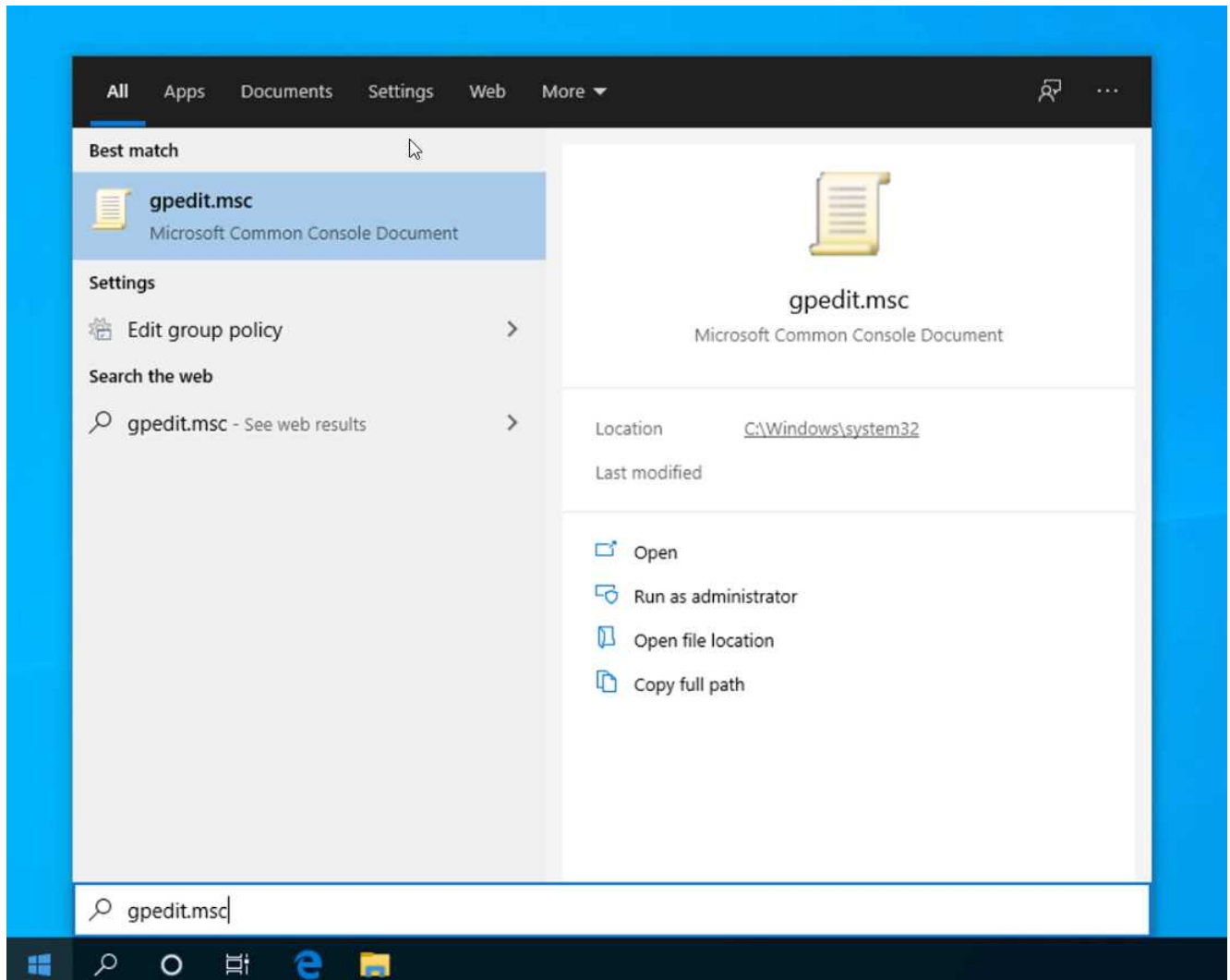
If you want to prevent this from happening, here's the steps on how you could disable Windows Defender permanently.

Disable Permanently

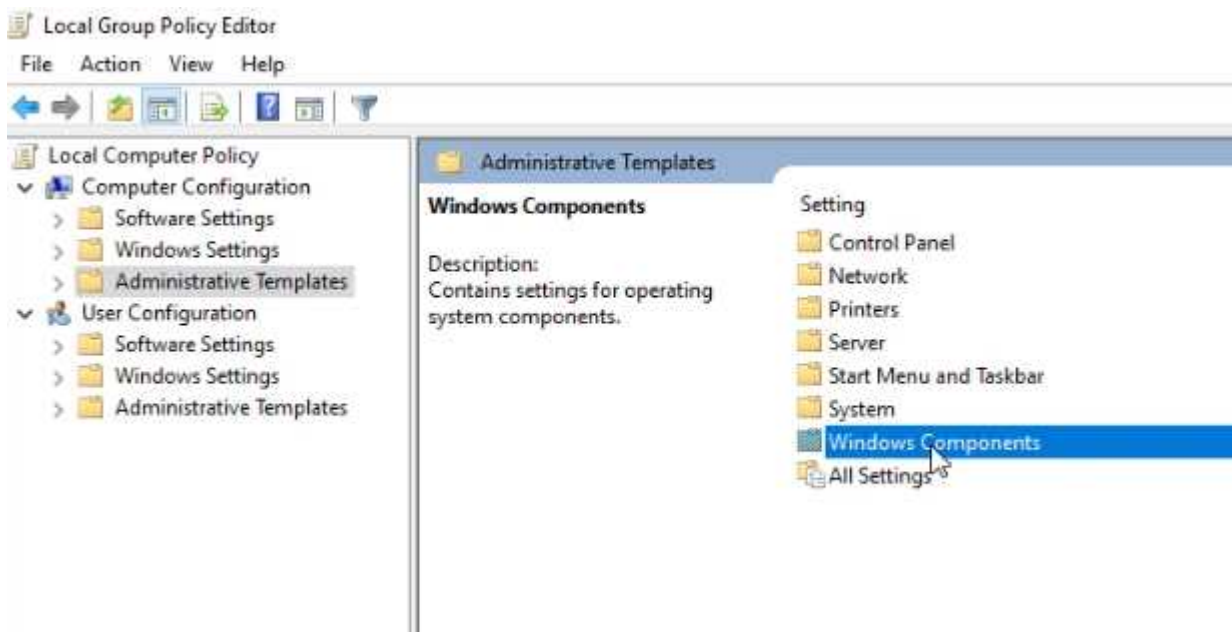
Under the same window, Virus & threat protection settings, toggle the tamper protection to off.



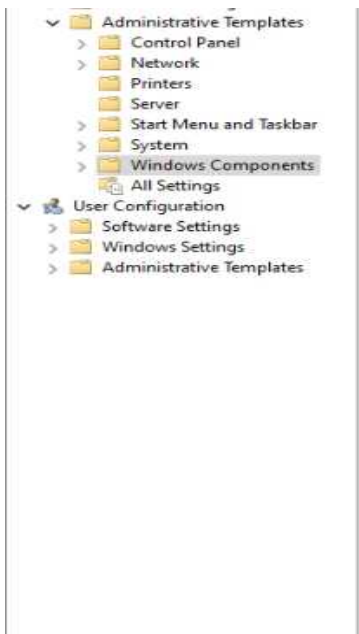
Then go to your start menu, look for **gpedit.msc** and open it. (If you don't have *gpedit.msc* click [here](#))



Click on **Administrative Templates** > **Windows Components** under **Computer Configuration**.



Look for the folder **Windows Defender Antivirus** under **Windows Components**.



Double click on **“Turn off Windows Defender Antivirus”** make sure to set it to **enabled**. Hit the apply and ok button.

Requirements:
At least Windows Vista

- MpEngine
- Network Inspection System
- Quarantine

Turn off Windows Defender Antivirus

Previous Setting Next Setting

☐ Not Configured Comment:

☒ Enabled

☐ Disabled

Supported on: At least Windows Vista

Options:

Help:

This policy setting turns off Windows Defender Antivirus.

If you enable this policy setting, Windows Defender Antivirus does not run, and will not scan computers for malware or other potentially unwanted software.

If you disable this policy setting, Windows Defender Antivirus will run regardless of any other installed antivirus product.

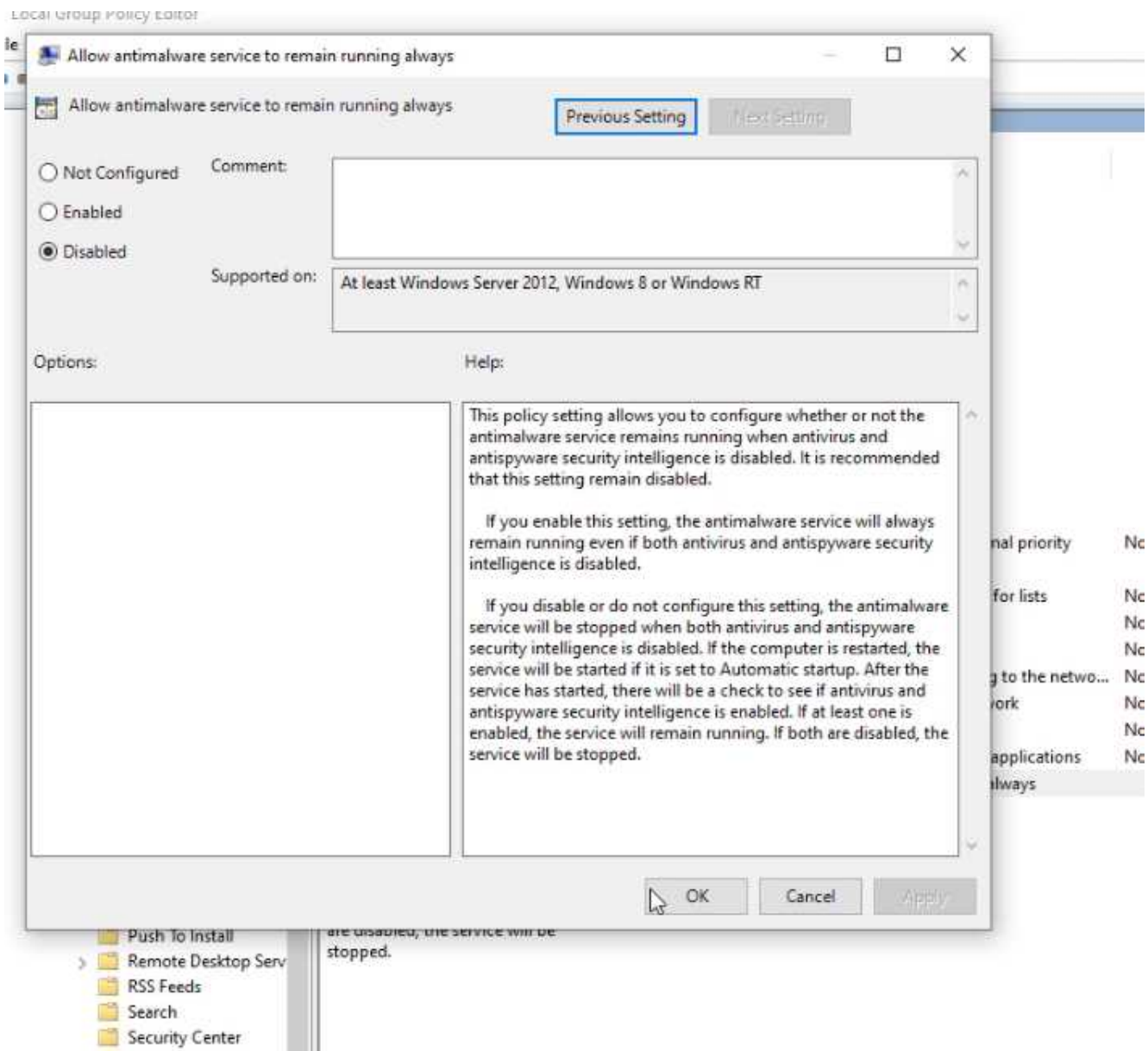
If you do not configure this policy setting, Windows will internally manage Windows Defender Antivirus. If you install another antivirus program, Windows automatically disables Windows Defender Antivirus. Otherwise, Windows Defender Antivirus will scan your computers for malware and other potentially unwanted software.

Enabling or disabling this policy may lead to unexpected or unsupported behavior. It is recommended that you leave this policy setting unconfigured.

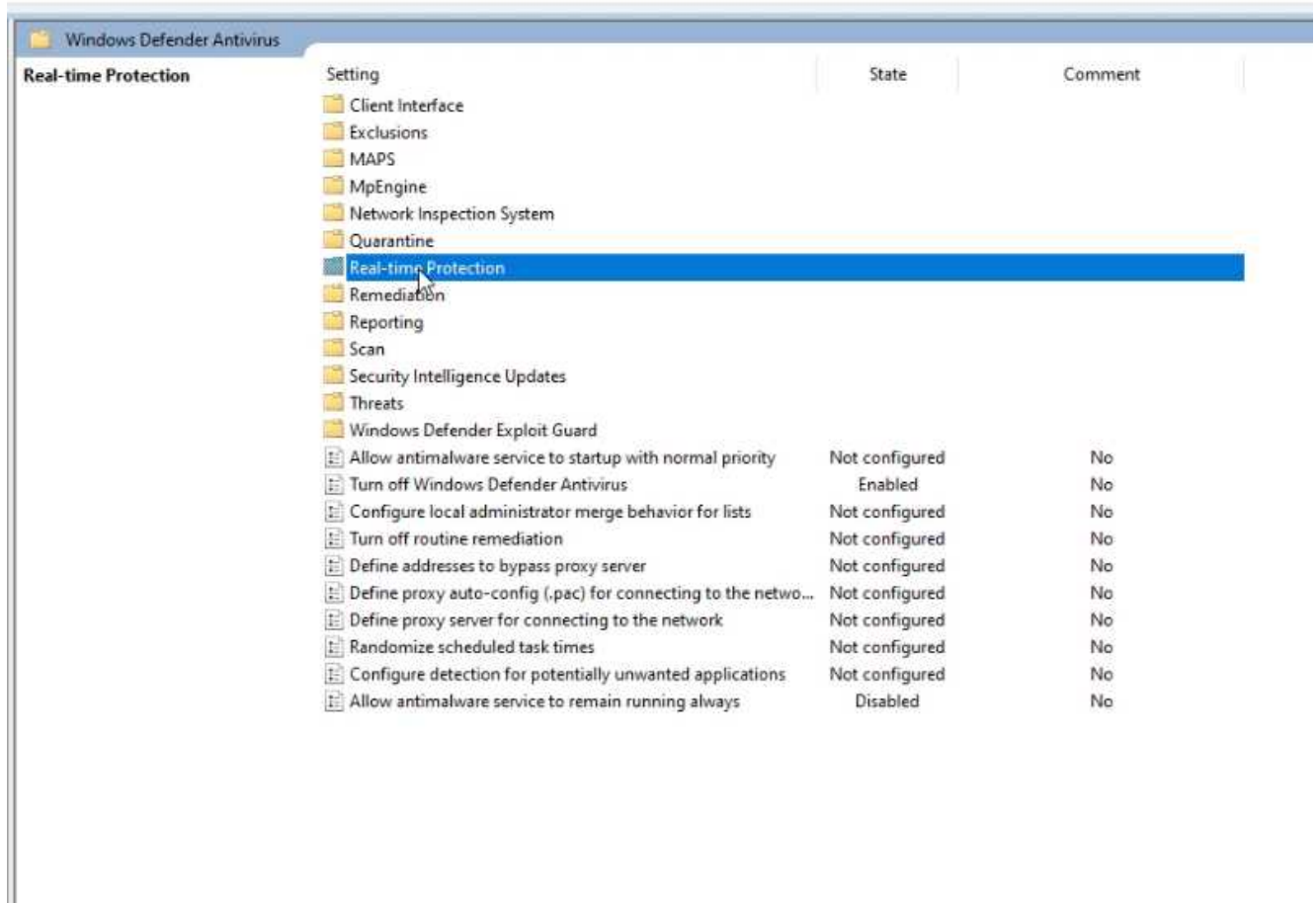
OK Cancel Apply

No
No
No
No
No
No
No
No

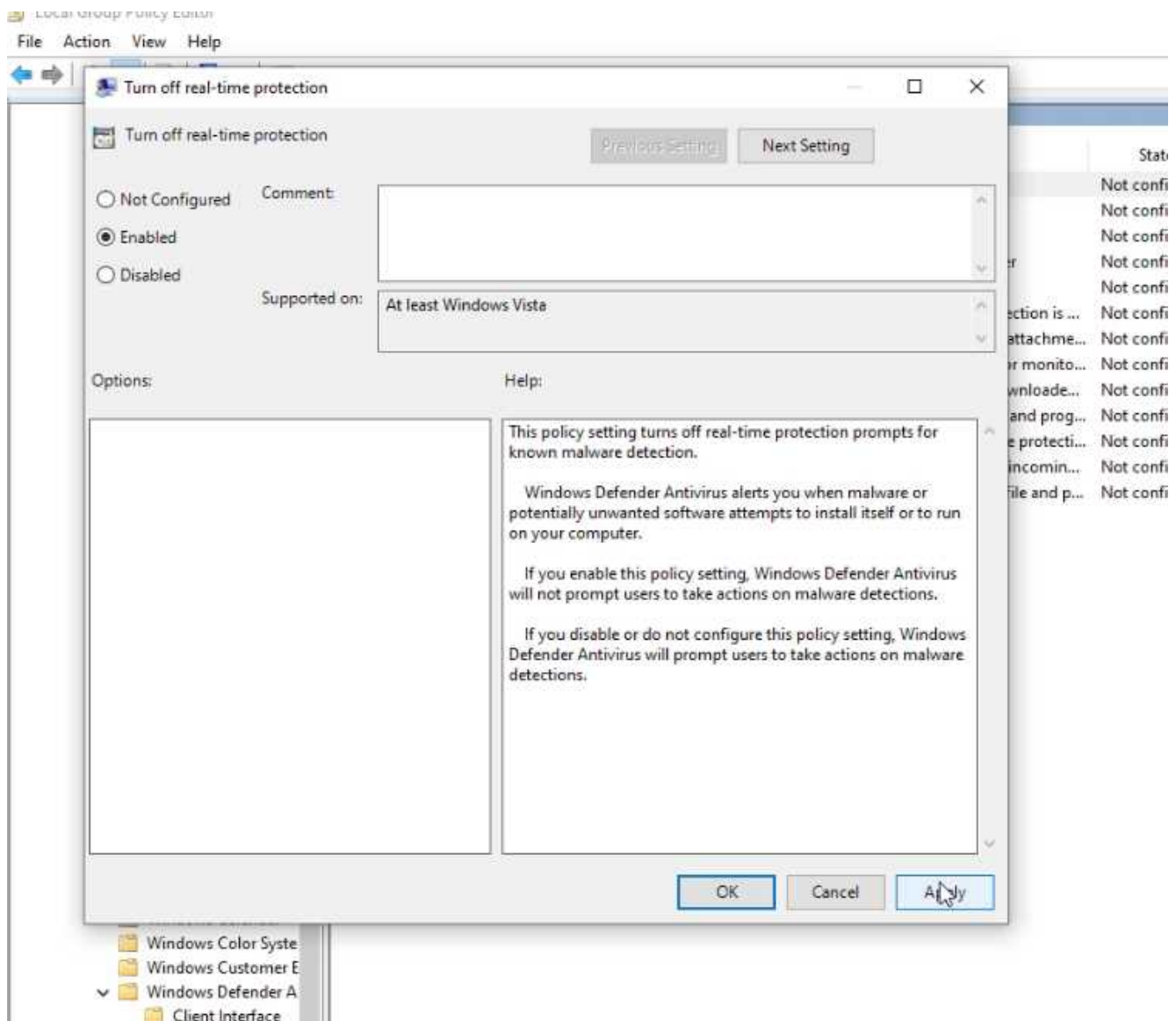
Then, double click on **“Allow antimalware service to remain running always”** make sure to set it to **disabled**. Hit the apply and ok button.



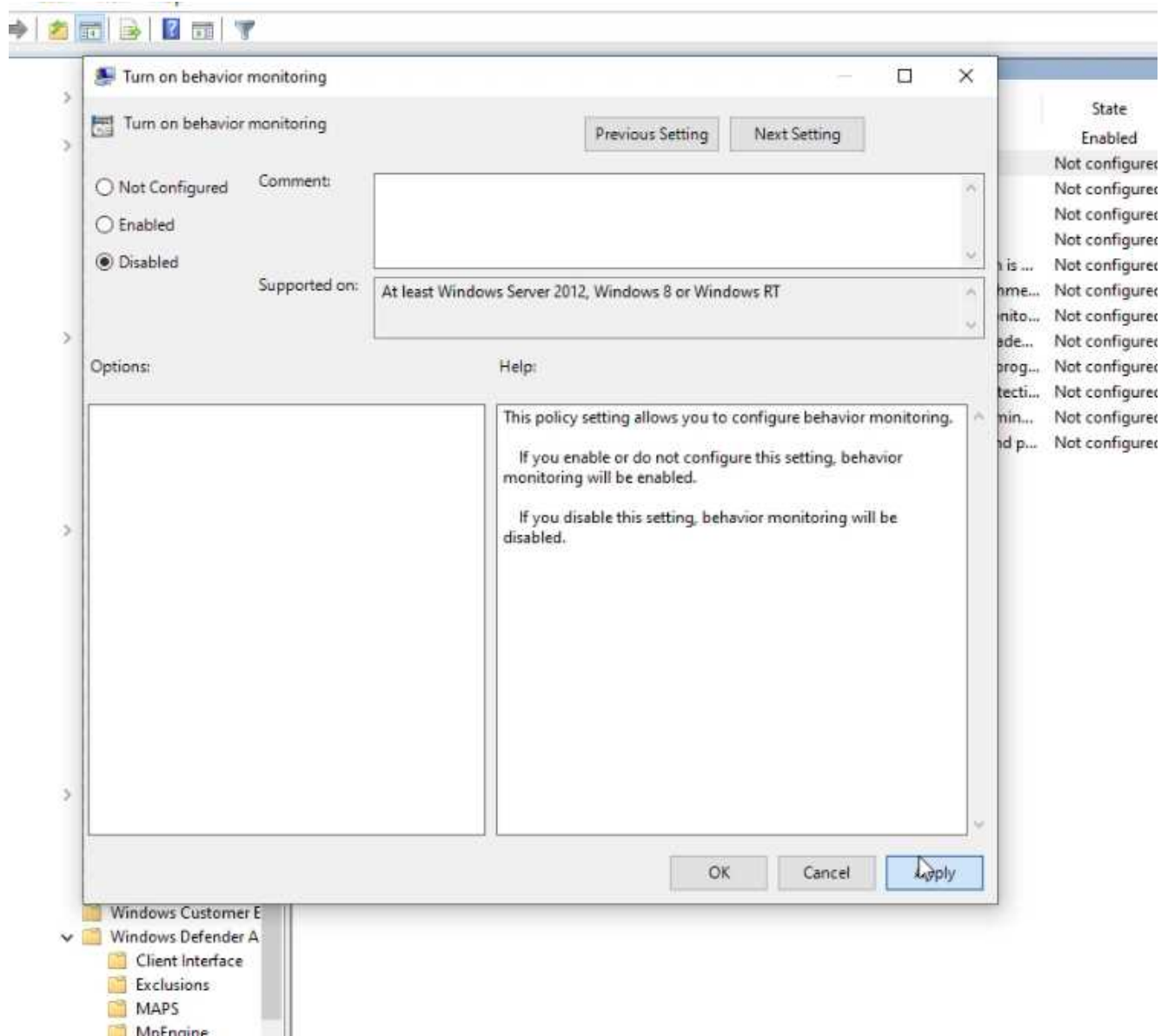
After that, go to “Real-time Protection” folder.



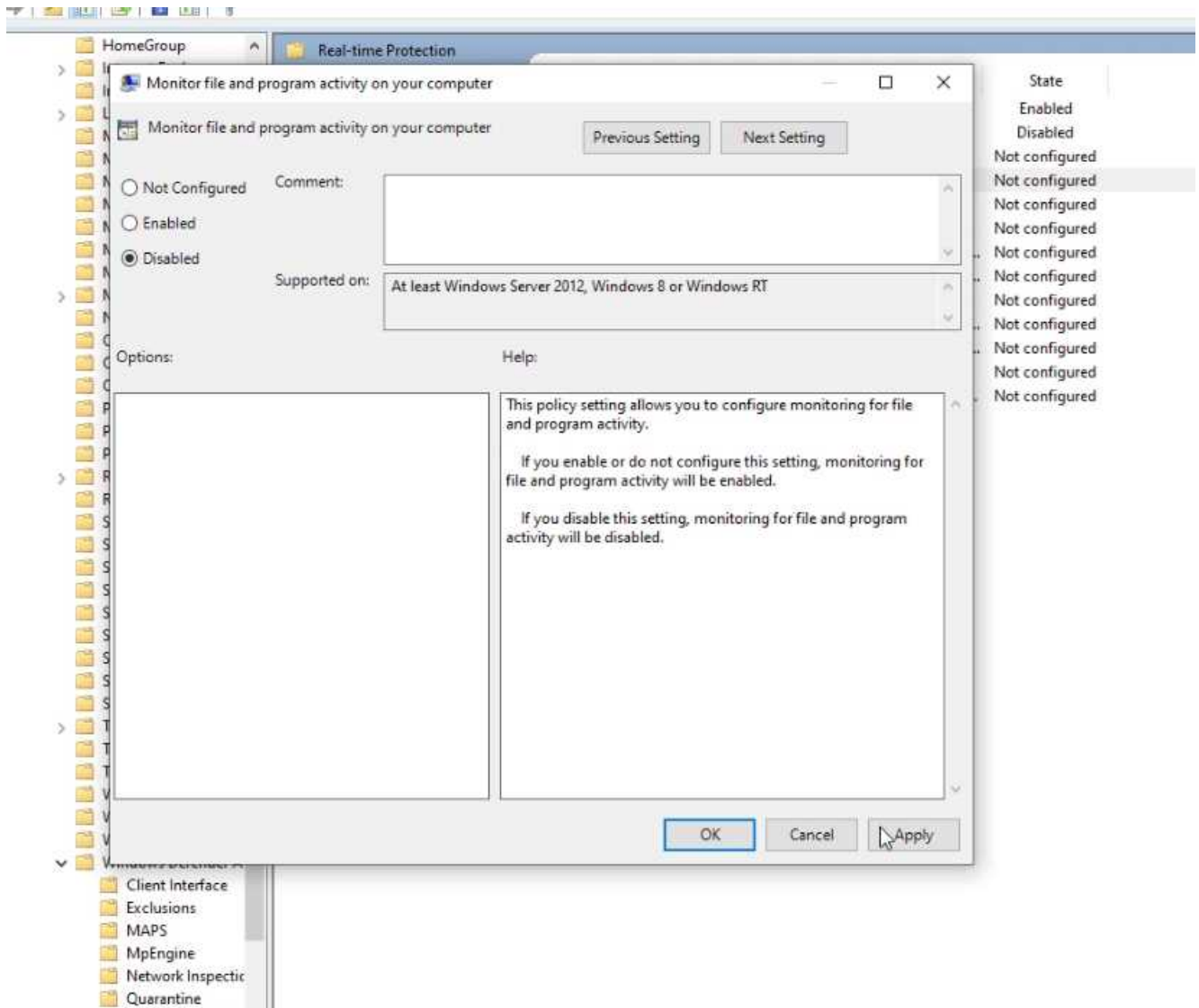
Double click on “**Turn off real-time protection**” make sure to set it to **enabled**. Hit the apply and ok button.



Double click on “**Turn on behavior monitoring**” make sure to set it to **disabled**. Hit the apply and ok button.



Lastly, double click on **"Monitor file and program activity on your computer"** make sure to set it to **disabled**. Hit the apply and ok button.



That's it! You've successfully disabled Windows Defender permanently on your Windows 10 computer.

Video tutorial is included on this page in-case you want to have a step-by-step visual guide.

Let me know if this worked for you down on the comments below.